

# Youth Supplement

## for Classical Guitar Method Volume One

### 2017

#### **Staff Identification**

Begin the theory section when learning the open strings G, B, E and Etude No. 1 and 2. It will become even more helpful when trying to learn the notes on the second and first strings. The theory section is intended for youth students to become accustomed to the staff and to look at the location of note heads on either lines or spaces.

#### **Notes on the Top Two Strings**

Use this section of the supplement before learning the second and first string notes in the method book. The student may invent a name for each piece by using an animal starting with the same letter. For example: *Buzzing Bee* for The B Song. Students love adding a personal touch to their pieces.

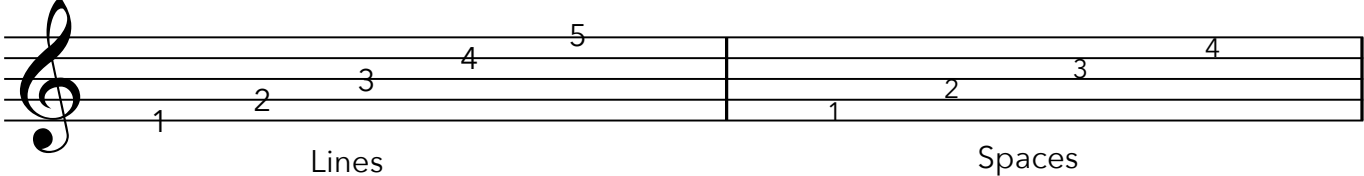
These exercises might seem overly simple but they can be completed successfully and are easy sticker opportunities. Students enjoy activities they can do well so simplicity is the goal. Successful performances will offer the opportunity for honest praise from the teacher and parent resulting in smiles and feelings of accomplishment from the student.

The student should count out loud and also repeat saying the right hand fingering out loud. The student should memorize each song. Parents and teachers should test the student by calling out random songs and having the student perform it by memory.

The student does not need to read the notes on the staff as they will get plenty of practice with reading in the method book. The intention here is to have the student memorize the location of the notes on the guitar before progressing to the *Five Melodies* section in the method book where they will be required to read and multi-task with both hands.

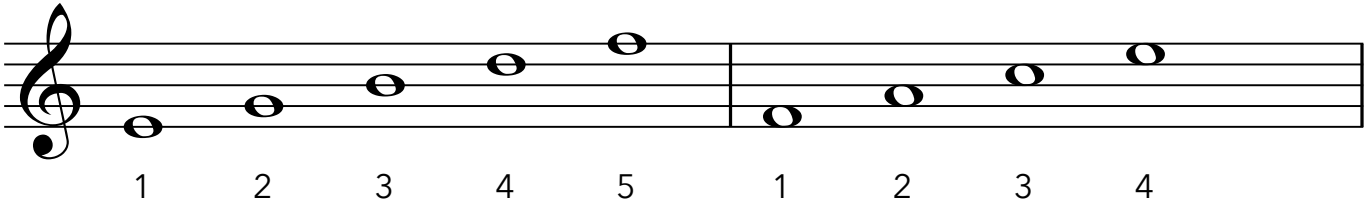
# Staff Identification

The staff has five lines and four spaces

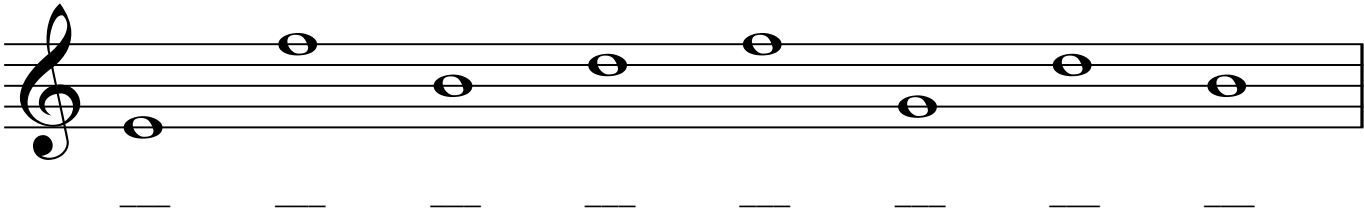


Notes on lines

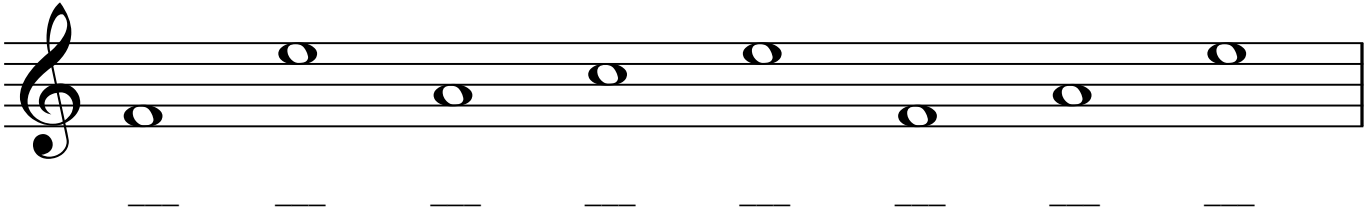
Notes on spaces



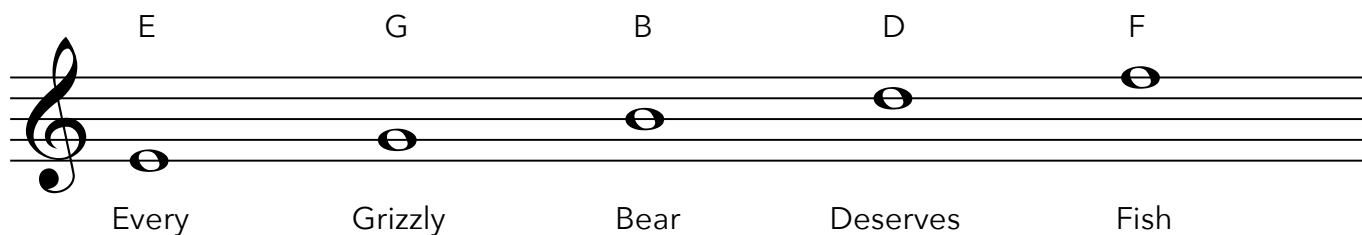
Write the line number below each note



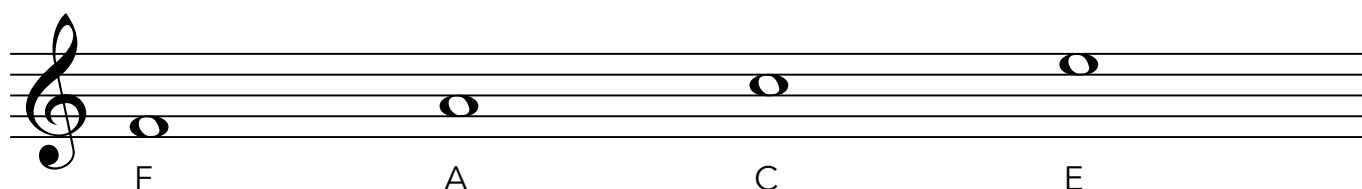
Write the space number below each note



The treble clef line notes can be easily memorized with a saying.

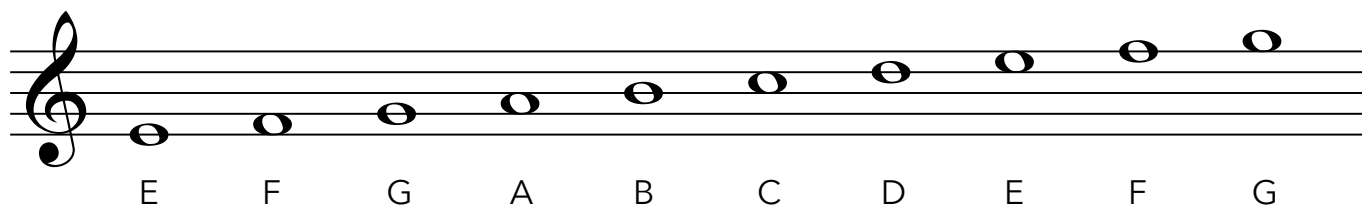


The treble clef space note names spell the word: FACE

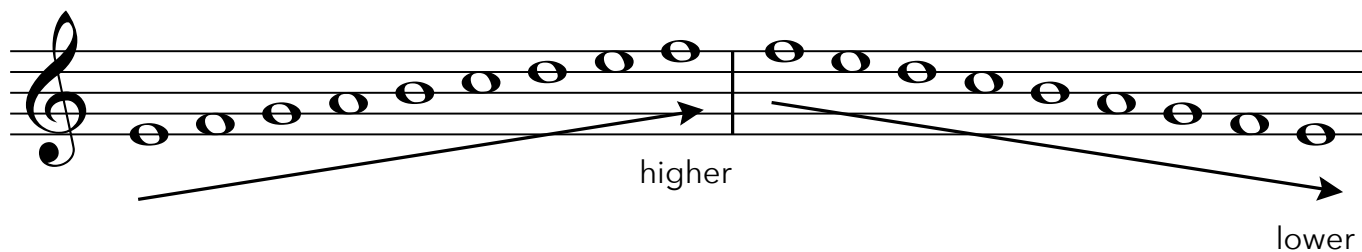


Circle the line notes in this example.

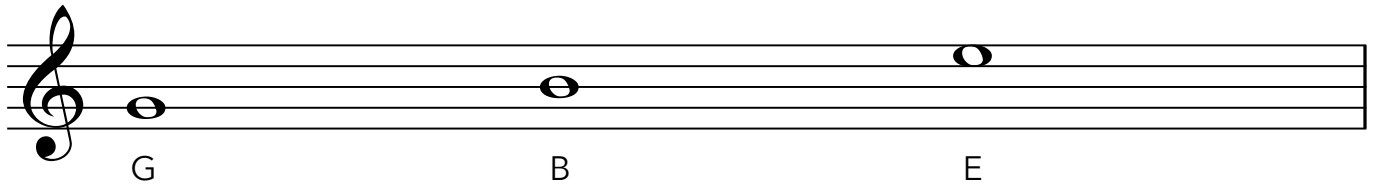
Notice how the notes progress through the musical alphabet starting over after G.



Notes higher on the staff sound higher in pitch while notes lower on the staff sound lower.



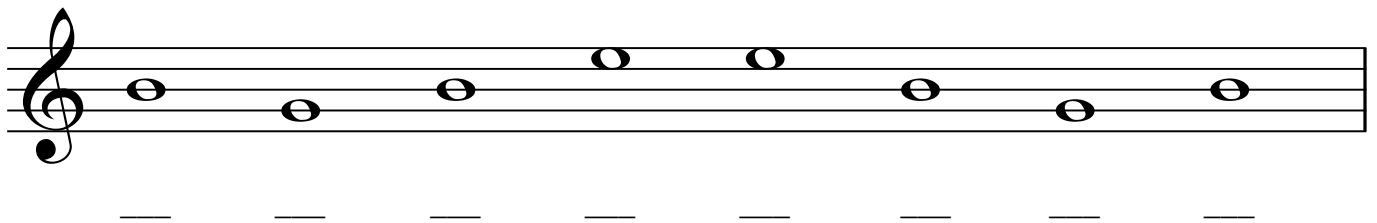
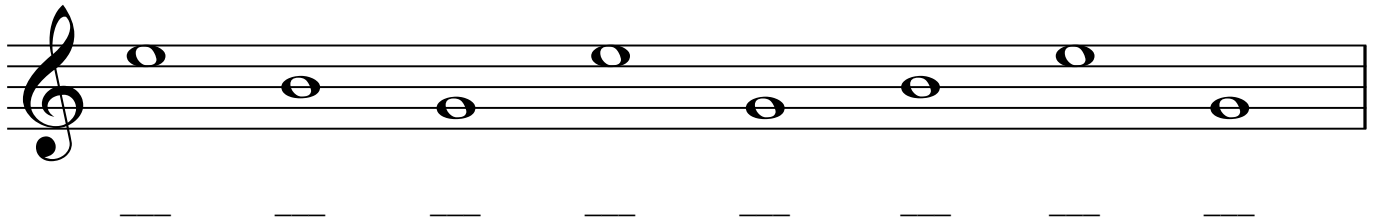
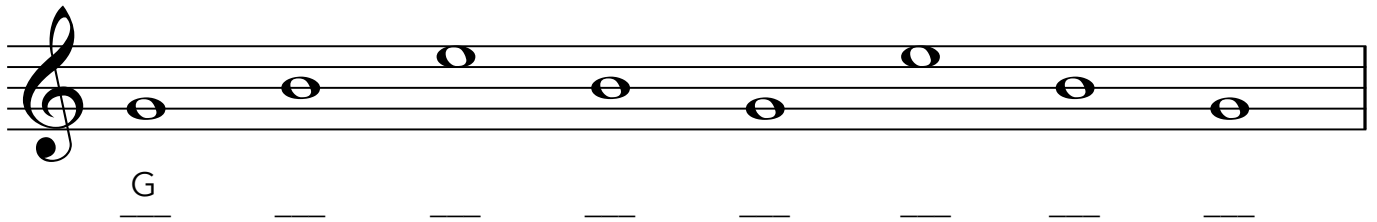
## Notes for Etude No. 1 and 2



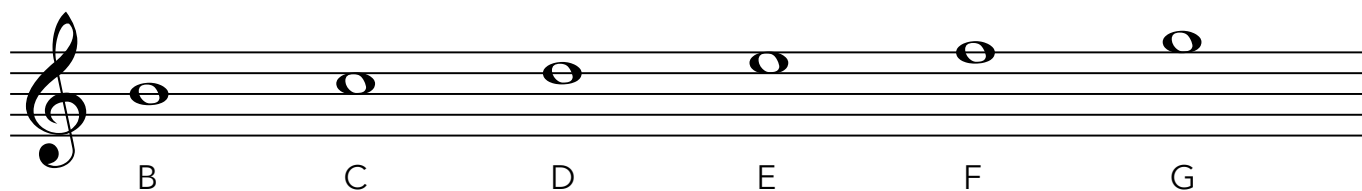
### Name the following notes

Tip for Line Notes: **E**very **G**rizzly **B**ear **D**eserves **F**ish

Tip for Space Notes: FACE



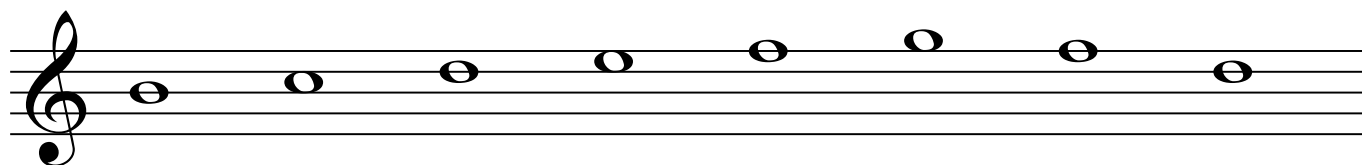
## Notes on the second and first strings of the guitar



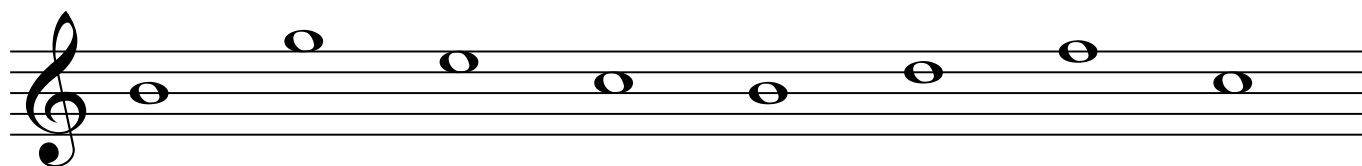
### Name the following notes

Line Notes: **E**very **G**rizzly **B**ear **D**eserves **F**ish

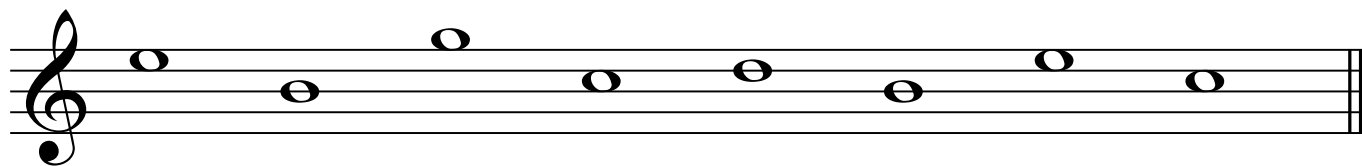
Space notes: FACE



— — — — — — — —



— — — — — — — —

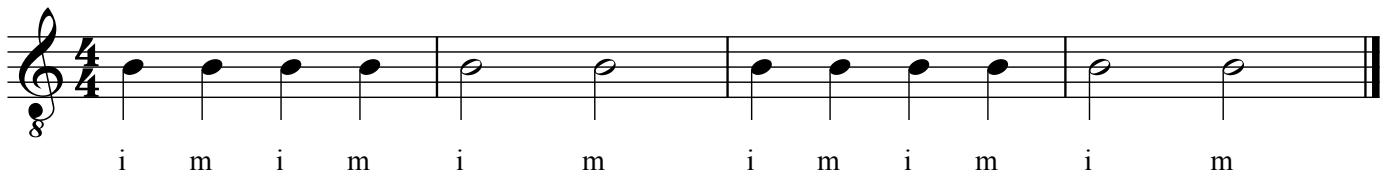


— — — — — — — —

# Notes on the Top Two Strings

The **B** Song or \_\_\_\_\_

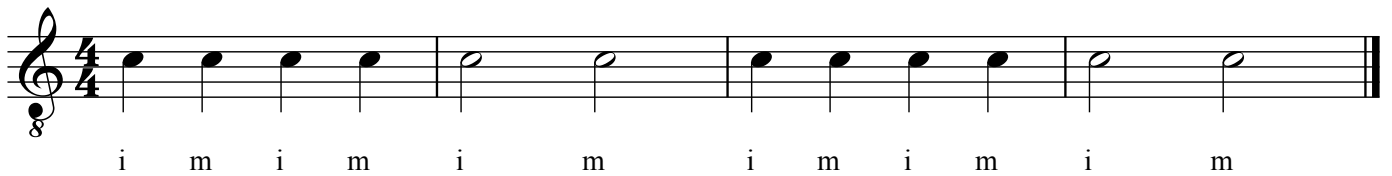
B = 2nd string, open



Musical notation for the B Song, written in 4/4 time on a treble clef staff. The melody consists of quarter notes in the first two measures and half notes in the last two measures. The notes are B2, C3, D3, E3, F3, G3, A3, B3, C4, D4, E4, F4, G4, A4, B4. Below the staff, the letters 'i' and 'm' are placed under the notes to indicate fingerings: i m i m i m i m i m i m.

The **C** Song or \_\_\_\_\_

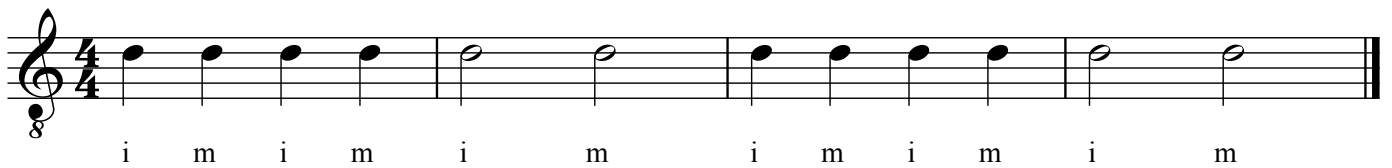
C = 2nd string, 1st fret, 1st finger



Musical notation for the C Song, written in 4/4 time on a treble clef staff. The melody consists of quarter notes in the first two measures and half notes in the last two measures. The notes are C3, D3, E3, F3, G3, A3, B3, C4, D4, E4, F4, G4, A4, B4, C5. Below the staff, the letters 'i' and 'm' are placed under the notes to indicate fingerings: i m i m i m i m i m i m.

The **D** Song or \_\_\_\_\_

D = second string, 3rd fret, 4th finger



Musical notation for the D Song, written in 4/4 time on a treble clef staff. The melody consists of quarter notes in the first two measures and half notes in the last two measures. The notes are D3, E3, F3, G3, A3, B3, C4, D4, E4, F4, G4, A4, B4, C5, D5. Below the staff, the letters 'i' and 'm' are placed under the notes to indicate fingerings: i m i m i m i m i m i m.

# The **E** Song or \_\_\_\_\_

E = 1st string, open

i m i m i m i m i m i m

# The **F** Song or \_\_\_\_\_

F = 1st string, 1st fret, 1st finger

i m i m i m i m i m i m

# The High **G** Song or \_\_\_\_\_

G = 1st string, 3rd fret, 4th finger

i m i m i m i m i m i m

## Rocket Launch!

B C D E F G  
i m i m i m i m i m i m i m i m i m i m